

Canon



**imageRUNNER
ADVANCE**

**6075
6065
6055**

multifunction printer
high speed, high volume
black-and-white copy/print
color scan

OFFICE SOLUTIONS




advancing business





imageRUNNER ADVANCE




6075
6065
6055

 Copy/Print/Send/Store

 Up to 11" x 17"

 Up to 1200 x 1200 dpi

 Black-and-White Copy/Print

 Color Scan and Send

Exceptional power

- > Advanced imageCHIP system architecture
- > 80GB HDD standard; up to 250GB HDD
- > 1.5GB RAM standard; 2GB RAM Maximum

Impressive speed

- > Up to 75 ppm (6075), 65 ppm (6065), and 55 ppm (6055) (Letter)
- > Up to 200/100 ipm single-pass duplex scanning at 300 dpi (BW/Color)

High-volume paper handling

- > Up to 7,700-sheet maximum paper capacity
- > 14 lb. Bond to 80 lb. Cover (drawers, paper decks)
- > 14 lb. Bond to 140 lb. Index (bypass)
- > Up to 11" x 17" paper size

Flexible in-line finishing options

- > Multiposition stapling, booklet-making, 2- and 3-hole punching
- > Document insertion (C-fold/Z-fold)

Enhanced collaboration

- > Advanced Box document sharing solution
- > Standard UFR II Print
- > Standard Universal Send
- > Adobe® PostScript® 3™ and Adobe PDF formats
- > Scan/print via USB
- > imagePASS
- > uniFLOW

imageRUNNER ADVANCE Essentials

- > imageRUNNER ADVANCE Desktop
- > imageRUNNER ADVANCE Tracker
- > Workflow Composer and Connectors

Strong environmental focus

- > ENERGY STAR® qualified
- > Reduction of CO₂ emissions in manufacturing process
- > Exceeds EU RoHS Directive standards

Remarkable productivity. Spectacular efficiency. A bright future for high-volume office environments.

Ahead of its time

With a dramatically new platform, the Canon imageRUNNER® ADVANCE 6075/6065/6055 systems deliver the powerful performance large corporate offices and workgroups demand. Engineered for high-volume traffic, these digital monochrome models rapidly scan, print, copy, fax, and distribute documents with precision and ease.

A profitable advantage

Operate at peak efficiency with these high-speed, large-capacity imageRUNNER ADVANCE systems. Canon's cutting-edge technologies consistently produce exquisite image quality. Advanced management tools and multiple in-line finishing options help you produce professional documents with remarkable ease. And a range of automated features promises maximum uptime to help you meet demanding deadlines.

User-centric from all viewpoints

Users will be delighted by the friendly interface and their ability to access functions with ease. IT administrators will applaud the new centralized device management solutions and vigorous security features. And business owners will value automated workflow options that boost productivity and help reduce costs.

Smooth workflow, dynamite results

More than ever, business requires us to produce higher-quality work in less time. The imageRUNNER ADVANCE 6075/6065/6055 models make this easy with a range of collaboration tools, streamlined one-step operations for complicated tasks, and the power to perform multiple jobs concurrently.

Even greener

Canon's commitment to protecting and sustaining the environment is stronger than ever. With the imageRUNNER ADVANCE Series, Canon has incorporated new green technologies that further conserve energy and resources, reduce CO₂ emissions, and help prevent pollution.

A truly advanced partner

Great partnerships deliver a strong competitive advantage. The imageRUNNER ADVANCE 6075/6065/6055 models offer cutting-edge tools and resources that allow you to do better work more rapidly. This gives you the opportunity to focus on the powerful ideas that will advance your business—now and in the future.



Remarkable speed. Amazing ease. Standout quality. A winning combination.

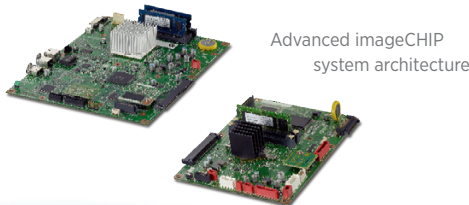
A beautiful way to work

The imageRUNNER ADVANCE 6075/6065/6055 models are designed to offer a multitude of resources in a space-saving footprint. The warm, natural color palette integrates seamlessly into any office environment, and the smartly designed new TFT control panel is comfortable and easy to use.

Power for exceptional performance

Accomplish multiple tasks concurrently with the exceptional speed your work demands. These imageRUNNER ADVANCE models incorporate Canon's Advanced imageCHIP system architecture, which uses two processors to deliver outstanding multitasking performance.

The image processor board works with the scanner, adjusts image size, and ensures superb image quality and super-fast processing. The information processor board controls the user interface and coordinates device networking and connectivity.



Simpler, more intuitive operation

Completely redesigned, the highly responsive, flexible user interface is all about simplicity and ease. The imageRUNNER ADVANCE 6075/6065/6055 models have a range of features that allow users to accomplish much more in much less time.

Size. The large 8.4" full-color, high-resolution TFT screen boasts wide viewing angles and exceptional clarity. An optional upright 10.4" screen with a movable arm is also available.

Menus. Two menus streamline your workflow. Just a stroke of the Main Menu keys gives you instant access to system functions. The Quick Menu powers productivity by allowing you to combine and access routine tasks at the touch of just one button.

Customization. Organize the onscreen buttons to fit the way you work by determining their number, size, and layout. And you can even select an onscreen background.

Tutorial. For users who have "how to" questions, these Canon imageRUNNER ADVANCE models have a tutorial button right on the screen. Quickly access simple step-by-step instructions.



Main Menu
Customize the number, size, and layout of the function buttons, and select a background.



Quick Menu
Combine and access commonly performed tasks with just one button.

Wallpaper
Choose from a palette of background designs.

Walk-up convenience

The imageRUNNER ADVANCE 6075/6065/6055 systems are designed to make your work easier. Now you can scan to, or print from, a USB thumb drive. Even expand connectivity options to include memory media such as an SD card or Compact Flash card.* To enter data more comfortably, an optional keyboard may be attached.



USB Memory Media

Keyboard

Keep running

With the imageRUNNER ADVANCE 6075/6065/6055 models, you're assured the ongoing productivity your business demands. Status notifications keep you ahead of the game, and toner and paper can be replaced on-the-fly. If the correct paper size or stock for a job is unavailable, the system can begin the next job without delay to help maximize uptime.



Toner bottle

Essential solutions

Canon has raised the bar on productivity and cost control. Introducing imageRUNNER ADVANCE Essentials—specially created solutions that seamlessly connect the MFP to the user. Now, right from their PCs, users can perform personal document workflow tasks. Productivity is enhanced by assigning complicated tasks to a single button. Administrators can track and manage use and even influence behavior. And with amazing ease, the imageRUNNER ADVANCE 6075/6065/6055 models can quickly link to your external systems.

A striking impression

Enjoy black-and-white image quality that truly stands out. True 1200 x 1200 dpi print resolution produces fine lines and crisp text, even at small font sizes. With 256 gradations, halftones are rendered in rich shades from the lightest gray to the deepest black. Canon's new pO toner produces clear, detailed images with a smooth, high-quality finish.

Canon's innovative technologies make it easy to maintain accurate and consistent image quality. The Auto Gradation Adjustment makes sure densities and halftones are set at the ideal levels.



*Requires optional equipment.

ADVANCED WORKFLOW

Smart solutions. Seamless integration. Stunning productivity. Workflow redefined.

Accelerated performance

High-volume office environments demand the powerful performance and versatility that the imageRUNNER ADVANCE 6075/6065/6055 systems deliver.

Scanner. The 300-sheet capacity, ultra-fast single-pass duplex color scanner rapidly converts paper documents to color or black-and-white digital files.

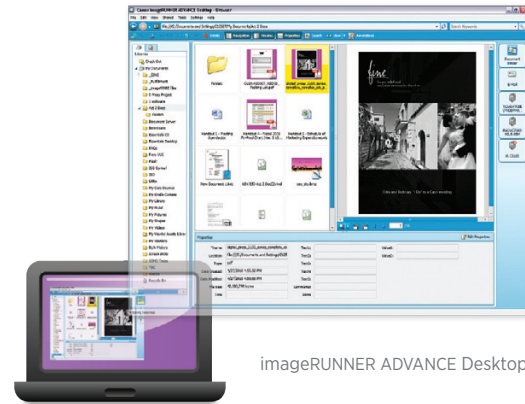
Send. Files move at an outstanding pace across the network with Universal Send and formats such as High Compression PDF/XPS, which significantly reduces color file sizes.

Processing. Large files and complex print jobs are easily and rapidly processed with the latest system architecture.

Finishing. A choice of modular in-line accessories makes professionally finishing documents simple.

Smart productivity

With a wide range of software solutions, Canon gives your business the edge in saving time, lowering costs, and improving quality. The Workflow Composer utility can reduce multistep and frequently performed operations to the touch of one button on the Quick Menu. You can name interface buttons to match your business processes. And with Canon's MEAP® development platform, you're able to take advantage of added applications to extend your capabilities.



imageRUNNER ADVANCE Desktop

Right from your PC

Whether from the imageRUNNER ADVANCE model or your own desk, you can have direct access to the functions that make your work easier. The imageRUNNER ADVANCE Desktop utility features a clear, comprehensive PC interface that transforms your computer into a central command station. Now you can perform personal document workflow tasks, such as archiving, merging, and distributing, all from the desktop with "drag-and-drop" simplicity. You can also search for documents with ease, and even monitor the status of your work from any location on the network.



Single-Pass Duplexing Document Feeder



Paper Folding Unit



Post-Process Document Inserter



Booklet Finisher

Scan, store, and collaborate

Designed to streamline workflow and meet each user's needs, these models let you easily save, store, and access scanned documents in multiple locations. Simply select a destination and scan the original. Using built-in spaces like Mail Box and Advanced Box, or external spaces such as memory media or another networked location, you can choose the most efficient way to work.

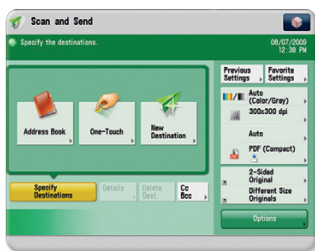
Advanced Box. Canon's latest built-in document sharing solution really helps multiple users collaborate. Files can be stored in Advanced Box shared folders and accessed from multiple locations, including PCs or other networked imageRUNNER ADVANCE systems. When privacy is required, files can be saved to personal folders.

Scan, send, and collaborate even more

The imageRUNNER ADVANCE 6075/6065/6055 models make it easy to share and distribute documents widely across a network.

Scan in Color. These systems incorporate a single-pass duplex color scanner that converts paper documents into high-quality color or black-and-white digital files.

Universal Send. In one simple operation, you can scan color and black-and-white documents and distribute to multiple destinations, such as e-mail and fax addresses and network folders. Now Universal Send offers an expanded range of file formats, including High Compression PDF/XPS, Adobe PDF Reader Extensions, Searchable PDF, and Encrypted PDF.



Universal Send



Fax. Readily handle large volumes of fax documents and keep information flowing. These imageRUNNER ADVANCE models now support up to four fax lines and have the ability to share the fax function of another imageRUNNER ADVANCE model on the same network. With the Job Forwarding feature, incoming faxes can be automatically routed to other systems, users, or destinations, including the Advanced Box file-sharing space.

Versatile print solutions

Canon's proprietary UFR II print technology is standard with these models. Options including Adobe PostScript 3 and PCL 5e/6 are also supported.

Enhance print productivity for multiuser environments with Canon's imagePASS-U1 print controller, which seamlessly integrates into your existing network infrastructure. Add advanced job and management tools, such as imageWARE Publishing Manager Select, and you'll be able to produce professional documents with amazing ease.

Today, everyone wants more control over their print environment. Canon's latest Driver Configuration Tool delivers just that by allowing you to set specific defaults and custom profiles. You can control costs by selecting easy-to-use features such as duplex printing or enhance security by opting for a forced watermark.



imagePASS-U1 Print Controller

Secure access. Sure safeguards. Streamlined control. Keep your business running smoothly.

Robust security

The imageRUNNER ADVANCE 6075/6065/6055 models offer multilayered solutions that help businesses meet their goals of privacy and protection yet keep work flowing. From installation to retirement, this Series has solutions that safeguard your confidential information and help support security compliance.

Access Management System. Limit access by user, group, or role. You can even limit access only for specific functions such as Universal Send.

Document Scan Lock and Tracking. Embed hidden tracking information in a document to restrict unauthorized copying or scanning, and to track the origin.

Adobe® LiveCycle® Rights Management ES Integration. Protect access to documents at every stage. After documents are scanned, specify security policies and select authorized recipients.

Trusted Platform Module. Safeguard vulnerable settings, such as passwords, with a new security chip featuring tamper-resistant hardware.

Data Encryption and Erase Options. Disguise information before it's written to the hard drive, and permanently remove it by overwriting when the job is complete.

Removable Hard Disk Drive. With this option, the Hard Disk Drive can be removed and placed in a secure location when not in use.

Centralized control

Control individual models. Remarkably intuitive, the Remote User Interface gives you centralized control right from your desktop. With this easy-to-use Web-based interface, you can access the information for any individual device. Check supply levels, monitor jobs, and stay completely informed.

A fleet of systems. Highly scalable, the imageWARE Enterprise Management Console offers one central point of control for all systems across your organization. This Web-based utility makes it easy to install and manage multiple Canon and third-party networked devices. Uptime is maximized by your ability to monitor jobs and supply levels—even receive e-mail notifications if toner is low or a tray is out of paper.

Security Feature Overview

Document Security

- Document Scan Lock and Tracking
- Adobe LiveCycle Rights Management ES Integration
- Encrypted Secured Print
- Watermark/Secure Watermark
- Copy Set Numbering
- Encrypted PDF
- Digital Signature PDF
- Fax Forwarding
- Fax Destination Confirmation



Mail Server Security

- POP Authentication before SMTP
- SMTP Authentication



Network Security

- IP/MAC Address Filtering
- SSL Encryption
- Network Application On/Off
- USB Port On/Off
- Destination Restriction
- IPSec
- IEEE 802.1x (Wire/Wireless)

Data Security

- Trusted Platform Module
- HDD Data Erase and Encryption
- Advanced Box Security
- Mail Box Password Protection
- Job Log Conceal
- Removable Hard Disk Drive



Authentication

- Department ID/Control Card Systems
- Device Level Log-in (SSO-H)
- Access Management System (AMS)
- Function Level Log-in via AMS
- Authorized Send
- Smart Card Authentication

Logging/Auditing Security

- imageWARE Secure Audit Manager

Note: Some features may be optional.

Professional quality. Simple connections. Long-term reliability.
A true competitive advantage.



Responsive performance

Built for high-volume environments, the imageRUNNER ADVANCE 6075/6065/6055 systems operate at peak efficiency to produce professional-quality documents. Rapidly generate reports, manuals, newsletters, and contracts—all rendered in rich black-and-white tones. With the flexible finishing capabilities these models offer, you'll impressively meet your organization's everyday business needs.

Easy integration

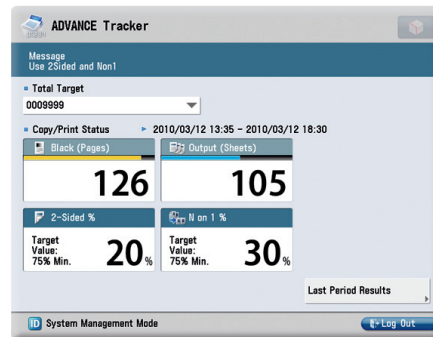
You'll appreciate the seamless integration of these models into your network. Readily save or retrieve files from a networked PC or another imageRUNNER ADVANCE model. If a model is busy, scan or print documents from another on the network. With Remote Fax you can share the fax function of another imageRUNNER ADVANCE system, reducing the cost of maintaining multiple fax devices and lines. Improved connector and link support enhances communication with existing systems and integrates with those you acquire in the future.

Peace of mind

Canon builds in signature reliability. Because Canon offers remote service monitoring, automated dispatching, a synchronized hard drive backup, and on-the-fly replacement of supplies, users can count on virtually nonstop operation. And with access to the latest technology and simple, clear upgrades, you can power through your jobs, giving you more time to devote to other business areas.

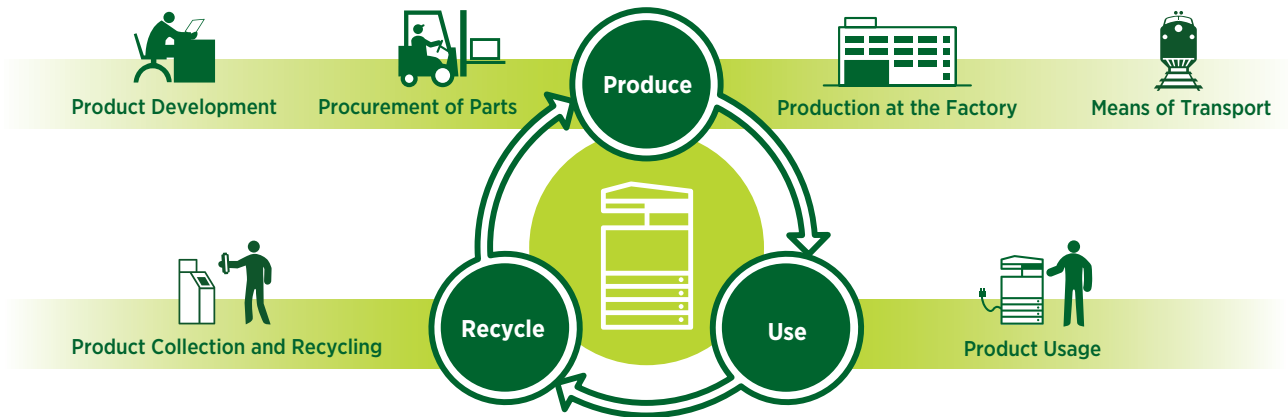
A positive bottom line

Cost savings are more crucial than ever. Now with Canon's imageRUNNER ADVANCE Tracker* utility, you have the power to identify, evaluate, and manage all copy/print/scan/fax usage. Allocate costs by department, project, or client. Even encourage double-sided printing right from your desktop. With the ability to monitor multiple networked devices and receive automated e-mail reports, you'll stay firmly in control of the bottom line.



imageRUNNER ADVANCE Tracker screen on control panel

Solutions that propel your business while reducing our environmental footprint—and yours.



Reduction of CO₂ emissions

Through its Life Cycle Assessment (LCA) System, Canon has lowered CO₂ emissions by 15% over previous models by focusing on each stage of the product life cycle, including manufacturing, energy use, and logistics.* These products are designed to be compact with less packaging to make transportation more efficient.

Eco-friendly design

Canon is making a difference through creative ecological thinking. The imageRUNNER ADVANCE models employ certain components fabricated with 100% recycled plastic from retired products. Canon's innovative green technologies also include bio-based plastic, a plant-derived compound that replaces certain petroleum-based plastic parts.

A greener way to work

A visionary company, Canon knows that the world and the workplace need a greener workflow. The imageRUNNER ADVANCE Series delivers just that. Now organizations across the globe can seamlessly share and distribute digital documents. And because you can preview files prior to printing, changes can be made before committing toner to paper to avoid print errors. Administrators can even encourage duplex printing to help reduce waste and save paper throughout the enterprise.

Greater energy efficiency

From the inside out, the imageRUNNER ADVANCE Series is designed for high energy efficiency and stellar performance. The combination of Canon's fusing technologies and new pO toner helps reduce overall energy consumption by minimizing heat and power requirements. The Series' duplex image reader captures superb-quality images at impressive speeds while using less energy than ever. Canon's Induction Heating Fusing System helps reduce power use. And when devices are in Sleep Mode, power consumption is 1W or less. With advanced technologies present in each model, the Series meets ENERGY STAR® standards.

Reducing pollution

All suppliers are required to meet Canon's stringent Green Procurement policy and environmental terms. This helps Canon exceed the toughest global standards set by the EU RoHS Directive, which requires the restriction of six specified hazardous substances. Canon currently restricts the use of 33 such substances.

*imageRUNNER ADVANCE 6075/6065/6055 models compared to imageRUNNER 5075/5065/5055 models.

Advance your business with a broad range of optional accessories.

Finishing Options

Booklet Finisher-E1

- 3-tray, 4,000-sheet capacity
- Corner and double stapling up to 50 sheets
- Booklet-making up to 16 sheets

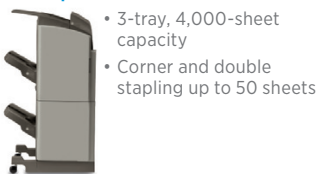
Document Insertion/Folding Unit-H1*

- Insert preprinted sheets
- Up to 11" x 17"
- 1-tray, 100-sheet capacity
- Z-fold, C-fold

External 2/3-Hole Puncher-A1*

- 2- and 3-hole punching

Staple Finisher-E1



- 3-tray, 4,000-sheet capacity
- Corner and double stapling up to 50 sheets

Document Insertion Unit-L1*



- Insert preprinted sheets
- Up to 11" x 17"
- 1-tray, 100-sheet capacity

Paper Feeding Options

Paper Deck Unit-A1

- 3,500-sheet capacity
- 14 lb. Bond to 80 lb. Cover
- Supports letter-sized paper
- Plain, heavy

Paper Deck Unit-D1

- 3,500-sheet capacity
- 14 lb. Bond to 80 lb. Cover
- Supports up to 11" x 17"
- Plain, heavy

Printer Options**

PCL Printer Kit-AJ1

PS Printer Kit-AJ1

Direct Print Kit (for PDF/XPS)-H1

imagePASS-U1

- Intel® Core™ Duo T2500 2.0GHz Processor
- 2GB RAM
- 80GB Hard Disk
- Adobe PS 3/PCL 5e/PCL 6

Usability Options

Upright Control Panel-B1

- 10.4" TFT high-resolution touch-screen
- Tilt-and-swivel capability
- Customizable UI screen

USB Keyboard

- External keyboard
- Connects via USB interface
- Use with Utility Tray-A1



Security Options

Universal Send Security Feature Set-D1

Universal Send Digital User Signature Kit-C1

Encrypted Secure Print-D1

Secure Watermark-B1

Document Scan Lock Kit-A2

Data Erase Kit-C1

HDD Data Encryption and Mirroring Kit-C2

Removable HDD Kit-AD1

IPSec Board-B2

Accessibility Options

Remote Operator's Software Kit-B1

Voice Guidance Kit-F1

Braille Label Kit

ADF Access Handle-A1



Note: For additional options and specifications, please refer to the back page.

*Requires Staple Finisher-E1 or Booklet Finisher-E1.
** UFR II standard.

Product Specifications

Main Unit

Operation Panel	
Standard:	8.4" SVGA Full-color TFT Screen
Optional:	10.4" SVGA Full-color TFT Upright Screen
Memory	
Standard:	1.5GB RAM
Maximum:	2GB RAM
Hard Disk Drive	
Standard:	80GB
Maximum:	250GB
Network Interface Connection	
Standard:	10/100/1000Base-TX
Optional:	Wireless LAN (IEEE 802.1x)
Other Interface	
Standard:	USB 2.0 (Host)x2 USB 2.0 (Device)
Optional:	Device Port: [USB 2.0 (Host) x2], Serial Interface, Copy Control Interface
Copy/Print Speed (letter)	
6075:	Up to 75 ppm
6065:	Up to 65 ppm
6055:	Up to 55 ppm
First-Copy-Out Time (letter)	
6075:	3.1 Seconds or Less
6065/6055:	3.3 Seconds or Less
Paper Sources (20 lb. Bond)	
Standard:	Dual 1,500-sheet Drawers Dual 550-sheet Cassettes 100-sheet Stack Bypass
Maximum:	7,700 Sheets (with Optional Paper Deck)
Output Paper Capacity (20 lb. Bond)	
250 Sheets (with Copy Tray)	
4,000 Sheets (with Staple Finisher or Booklet Finisher)	
Output Paper Sizes	
Drawers:	Letter
Cassettes:	11" x 17", Legal, Letter, Letter-R, Executive, Statement-R, Custom Size [5-1/2" x 7-1/8" to 11-3/4" x 19-1/4" (140mm x 182mm to 297mm x 488mm)]
Bypass:	11" x 17", Legal, Letter, Letter-R, Executive, Statement-R, Custom Size [4" x 5-7/8" to 11-3/4" x 19-1/4" (102mm x 149mm to 297mm x 488mm)]
Acceptable Paper Weights	
Drawers/	14 lb. Bond to 80 lb. Cover
Cassettes:	(52 to 220g/m ²)
Bypass:	14 lb. Bond to 140 lb. Index (52 to 256g/m ²)
Warm-up Time	
From Power On:	38 Seconds or Less
From Sleep Mode:	30 Seconds or Less
From Energy Saver Mode:	Approx. 20 Seconds

Power Requirements/Plug	
120-127V AC, 60Hz, 16A/NEMA 5-20P	
Dimensions (H x W x D)	
48" x 25-3/8" x 30-3/8" (1220mm x 645mm x 770mm)	
Installation Space (W x D)	
53-5/8" x 30-3/8" (1362mm x 770mm) (when Booklet Finisher is attached, and Stack Bypass and Auxiliary Tray are extended)	
Weight	
Approximately 522.5 lb. (237kg)*	
Toner (Estimated Yield @ 6% Coverage)	
56,000 Images	

Image Reader Unit

Scan Resolution	
Up to 600 x 600 dpi	
Acceptable Originals	
Sheet, Book, 3-Dimensional Objects [Up to 4.4 lb. (2kg)]	
Maximum Original Size	
Up to 11" x 17"	
Document Feeder	
Scan Method (Standard)	
Single-pass Duplexing Automatic Document Feeder	
Acceptable Originals	
Paper Size:	11" x 17", Legal, Letter, Letter-R, Statement, or Statement-R
Scan Speed (BW/Color; Letter)	
Simplex:	120/85 ipm (300 dpi) 120/51 ipm (600 dpi)**
Duplex:	200/100 ipm (300 dpi) 120/51 ipm (600 dpi)**
Paper Capacity (20 lb. Bond)	
300 Sheets	

Acceptable Originals	
Paper Size:	11" x 17", Legal, Letter, Letter-R, Statement, or Statement-R
Scan Speed (BW/Color; Letter)	
Simplex:	120/85 ipm (300 dpi) 120/51 ipm (600 dpi)**
Duplex:	200/100 ipm (300 dpi) 120/51 ipm (600 dpi)**
Paper Capacity (20 lb. Bond)	
300 Sheets	

Print Specifications

Engine Resolution	
1200 x 1200 dpi	
PDL Support	
Standard:	UFR II
Optional:	PCL 5e, PCL 6, Adobe PS 3
Print Driver Supported OS	
UFR II,	Windows® (Windows 2000/XP/7/Server 2003/Server 2008/Windows Vista®), Citrix MetaFrame, Macintosh® (OS X 10.4.9 or later)
Adobe PS 3:	Windows (Windows 2000/XP/7/Server 2003/Server 2008/Windows Vista), Citrix MetaFrame
PCL 5e/6:	Windows (Windows 2000/XP/7/Server 2003/Server 2008/Windows Vista), Citrix MetaFrame
XPS:	Windows Vista, Windows Server 2008, Windows 7
Direct Print Support	
Standard:	TIFF, JPEG, EPS***
Optional:	PDF, XPS***

Universal Send Specifications

Sending Method	
E-mail, I-Fax, SMB, File Server (FTP, SMB, WebDAV), Mail Box, Super G3 Fax (Optional)	
Communication Protocol	
File:	FTP (TCP/IP), SMB (TCP/IP), WebDAV
E-mail/I-Fax:	SMTP, POP3, I-Fax (Simple, Full)
File Format	
Standard:	TIFF, JPEG, PDF, PDF (Compact), PDF (Apply Policy), PDF (Optimize for Web), PDF/A-1b, XPS, XPS (Compact)
Optional:	PDF (Trace & Smooth), PDF/XPS (OCR), PDF (Encrypted), PDF/XPS (Digital Signature), PDF (Reader Extensions)

Fax Specifications

Maximum Number of Connection Lines	
4	
Modem Speed	
Super G3:	33.6 Kbps
G3:	14.4 Kbps
Compression Method	
MH, MR, MMR, JBIG	
Sending/Recording Size	
Statement to 11" x 17"	

Store Specifications

Mail Box (Number Supported)	
100 User Inboxes, 1 Memory RX Inbox, 50 Confidential Fax Inboxes	
Advanced Box	
Available	
Disk Space:	Approximately 10GB (Standard HDD), 113GB (250GB HDD)
Communication Protocol:	
SMB† or WebDAV	
Supported Client PC:	Windows (Windows 2000/XP/7/Windows Vista)

Memory Media	
Standard:	USB Memory
Optional:	SD, SDHC, CompactFlash, Memory Stick, Microdrive

Security Specifications

Standard	
Department ID Management, Single Sign-On H, Access Management System (Device and Function Level Log-in), Secured Print, Trusted Platform Module, User Access Control of Advanced Box, Mail Box Password Protection, IPV6, Restricting Features (Restricting the Send Function, Restricting New Addresses on Address Book), SSL Encrypted Communication, SNMPv1/v3, MAC/IP Address Filtering, SMTP Authentication, POP Authentication before SMTP, HDD Format, Adobe® LiveCycle® Rights Management ES Integration	

Other Optional Accessories

• Utility Tray-A1	• Authorized Send††
• Upright Control Panel-B1	• Super G3 Fax Board-AF1
• USB Keyboard	• Super G3 2nd Line Fax Board-AF1
• Card Reader-C1	• Super G3 3rd/4th Line Fax Board-AE1
• Copy Control Interface Kit-A1	• Remote FAX Kit-A1
• Convenience Stapler-B1	• Wireless LAN Board-B1
• Barcode Printing Kit-D1	• USB Device Port-A1
• Web Access Software-H1	• Multimedia Reader/Writer-A1
• imageRUNNER ADVANCE Essentials	• Additional Memory Type B (512MB)•
• Universal Send Advanced Feature Set-E1	• 2.5-inch/80GB HDD-C1
	• 2.5-inch/250GB HDD-D1

- * Includes ADF and consumables.
- ** Standard color scan support is up to 300 dpi. Up to 600-dpi scanning requires Additional Memory Type B (512MB).
- *** EPS and XPS cannot be printed directly from Memory Media or Advanced Box.
- † Browsing Advanced Box using SMB is not supported when imagePASS-UI is attached.
- †† Check with your Authorized Canon Dealer for availability.
- Required for 600-dpi color scanning.

NOTE: Some accessories require additional equipment or may be prerequisites for other options. Some accessories cannot be installed simultaneously. Check with your Authorized Canon Dealer for details.

As an ENERGY STAR® Partner, Canon U.S.A., Inc. has determined that these products meet the ENERGY STAR guidelines for energy efficiency. ENERGY STAR and the ENERGY STAR mark are registered U.S. marks. CANON, IMAGERUNNER, IMAGEPASS, MEAP, and the GENUINE logo are registered trademarks of Canon Inc. in the United States and may also be registered trademarks or trademarks in other countries. IMAGEWARE is a registered trademark of Canon U.S.A., Inc. in the United States and is a trademark of Canon Inc. in certain other countries. IMAGEANYWARE is a trademark of Canon. All other referenced product names and marks are trademarks of their respective owners and are hereby acknowledged. Some items may not be available at this time; please check for availability. Specifications and availability are subject to change without notice. All printer output images are simulated. Products are shown with optional accessories.

© 2011 Canon U.S.A., Inc. All rights reserved.

0156W051
0611R-6075/6065/6055-15M-L

Canon
image*ANYWARE*

1-800-OK-CANON
www.usa.canon.com

Canon U.S.A., Inc.
One Canon Plaza
Lake Success, NY 11042

