

Canon



imageRUNNER
ADVANCE

C2030
C2020

multifunction printer
color/black and white
compact design

OFFICE SOLUTIONS



advancing business





imageRUNNER ADVANCE



C2030 C2020

 Copy/Print/Send/Fax

 Up to 12" x 18"

 Up to 1200 x 1200 dpi**

 Color

Exceptional power

- > Advanced imageCHIP system architecture
- > 80GB HDD; 2GB RAM standard

Productive speeds

- > Up to 30 ppm (C2030) and 20 ppm (C2020)
- > Up to 44 ipm scanning at 300 dpi (BW/Color)

Outstanding paper handling

- > Up to 2,000-sheet maximum paper capacity
- > 17 lb. Bond to 80 lb. Cover
- > Plain, heavy, coated, envelopes

Internal finishing

- > 50-sheet corner or double-stapling
- > Up to 750-sheet output capacity

Enhanced collaboration

- > Standard Universal Send
- > Scan/print via USB
- > Adobe® PostScript® 3™ and Adobe PDF formats
- > Network Advanced Box Access†
- > Easy fleet integration
- > MEAP® enabled

imageRUNNER ADVANCE Essentials

- > imageRUNNER ADVANCE Desktop
- > imageRUNNER ADVANCE Tracker
- > Workflow Composer and Connectors††

Strong environmental focus

- > ENERGY STAR® qualified
- > Reduction of CO₂ emissions in manufacturing process
- > Exceeds EU RoHS Directive standards

* Not available in top cassette.

** If 1200 dpi print is selected, engine speed will slow down.

† Both models act as a client and can access the Advanced Box of another networked imageRUNNER ADVANCE system.

†† Supports Sending capabilities.

Communicate. Collaborate. Captivate. Smart business solutions.

A welcome addition

Now workgroups, branch offices, and small businesses can enjoy the astonishing productivity and performance of the imageRUNNER ADVANCE Series. Incorporating a redefined platform, the Canon imageRUNNER ADVANCE C2030/C2020 models help you create spectacular work efficiently and effectively — all at a comfortable cost.

Smaller and smarter

Inside a sleek design and compact footprint, these models really take advantage of Canon's next-generation technologies to bridge the paper and digital worlds. Create and finish professional-quality documents in vivid color and black and white. Easily perform tasks right from your PC. And streamline information exchange with colleagues by readily retrieving, editing, and sharing files through smooth integration with other networked imageRUNNER ADVANCE systems.

User-centric from all viewpoints

Users will be delighted by the friendly interface and their ability to access functions with ease. IT administrators will applaud the new centralized device management solutions and vigorous security features. And business owners will value automated workflow options that boost productivity and help reduce costs.

A reliable advantage

As part of a fleet or as stand-alone systems for small businesses, the imageRUNNER ADVANCE C2030/C2020 models deliver an impressive return on investment. Designed with maximum uptime and reliability in mind, these models keep your work moving efficiently day after day. Their range of innovative features will save you time and money without sacrificing quality.

Even greener

Canon's commitment to protecting and sustaining the environment is stronger than ever. With the imageRUNNER ADVANCE Series, Canon has incorporated new green technologies that further conserve energy and resources, reduce CO₂ emissions and heat, and help prevent pollution.

A truly advanced partner

Great partnerships deliver a strong competitive advantage. The imageRUNNER ADVANCE C2030/C2020 models offer cutting-edge tools and features that allow you to do better work more efficiently. This lets you focus on the powerful ideas that will advance your business now and in the future.



You'll wonder how you did it all before.

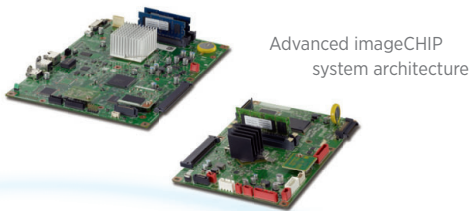
Beautifully engineered

The warm, natural color palette of the Canon imageRUNNER ADVANCE C2030/C2020 systems is a beautiful complement to any work environment. Designed to optimize space, these compact and lightweight models boast fully integrated features such as an optional internal finisher. With the intelligent functions and the cost savings these models offer, you'll experience smart improvements in your business.

Power for exceptional performance

You can accomplish multiple tasks with the efficiency your work demands. These imageRUNNER ADVANCE models incorporate Canon's Advanced imageCHIP system architecture, which uses two processors to deliver outstanding performance and quality.

The image processor board works with the scanner, adjusts image size, and ensures superb image quality and fast processing. The information processor board controls the user interface and coordinates device networking and connectivity.



Simple, friendly operation

Completely redesigned, the highly responsive, flexible user interface allows you to accomplish complicated tasks with ease. Because users have different tasks and work styles, the interface readily adapts to work the way you need to. And large, clearly identified onscreen buttons let you quickly access the functions you need.

Size. The 5.7" full-color, high-resolution TFT screen boasts wide viewing angles and exceptional clarity.

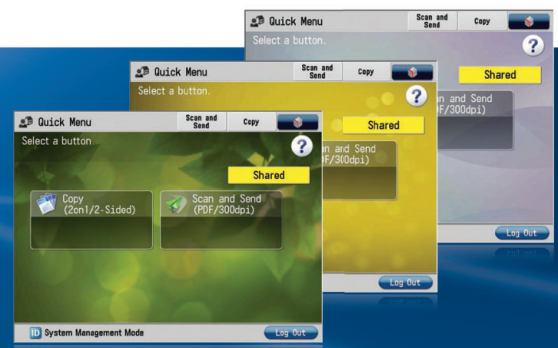
Menus. Two menus streamline your workflow. Just a stroke of the Main Menu keys gives you instant access to system functions. The Quick Menu powers productivity by allowing you to combine and access routine tasks at the touch of just one button.

Customization. Organize the onscreen buttons to fit the way you work by determining their number, size, and layout. And you can even select an onscreen background.

Tutorial. For users who have "how to" questions, these Canon imageRUNNER ADVANCE models have a tutorial button right on the screen. Quickly access clear, step-by-step instructions.



Main Menu
Customize the number, size, and layout of the function buttons, and select a background.



Quick Menu
Combine and access commonly performed tasks with just one button.

Wallpaper
Choose from a palette of background designs.

Outstanding image quality

Make a big impression in vibrant color or striking black and white. Canon's innovative technologies make it easy to produce consistently accurate, high-quality images. With true 1200 x 1200 dpi* print resolution and oil-free pQ toner, text is sharp with smooth corners, and the rich, clear images display subtle gradient transitions and a high-quality finish.



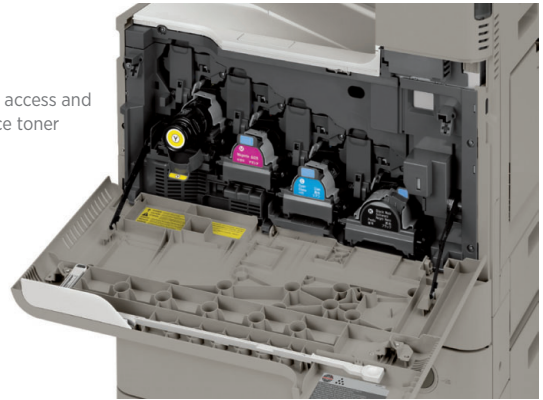
Essential solutions

Canon has raised the bar on productivity and cost control. Introducing imageRUNNER ADVANCE Essentials—specially created solutions that seamlessly connect the MFP to the user. Now, right from their PCs, users can perform document workflow tasks. Administrators can track and manage use and even influence behavior. And with amazing ease, the imageRUNNER ADVANCE C2030/C2020 models can quickly link to your external systems or existing network.

Up and running

With the imageRUNNER ADVANCE C2030/C2020 models, installation is a snap. You'll value the ongoing productivity these systems deliver. Stay prepared with status notifications. Maximize uptime with the ability to automatically move waiting jobs up in the queue if the correct paper for a job is unavailable.

Easily access and replace toner



Walk-up convenience

Designed to make your work easier, the Canon imageRUNNER ADVANCE C2030/C2020 models allow you to store to, or print from, a USB drive or other memory media such as an SD card or a CompactFlash card. To allow more comfortable data entry, an optional keyboard may be attached.



USB Memory Media

Keyboard

*If 1200 dpi is selected, the engine speed will slow down.

Work smarter, faster, easier. Productivity redefined.

Accelerated performance

To keep pace, branch offices, workgroups, and small businesses demand the powerful performance and versatility that the Canon imageRUNNER ADVANCE C2030/C2020 models deliver.

Warm-up Time. A fast warm-up time ensures less time waiting to scan, print, copy, or send documents.

Scanner. The 50-sheet capacity, fast automatic duplex color scanner readily converts paper documents to color or black-and-white digital files.

Send. Files breeze across the network with Universal Send and formats such as High Compression PDF/XPS, which significantly reduces color file sizes.

Processing. Scan, print, copy, fax, and send jobs smoothly with the latest system architecture.

Finishing. The space-saving internal finisher can corner or double-staple multipage documents.

Highly productive solutions

There's no need to compromise functionality, either. With a wide range of software solutions, Canon gives your business the edge in lowering costs and improving quality. Multistep and frequently performed operations can be reduced to the touch of a button on the Quick Menu. Interface buttons can be named to match your business processes. And with Canon's MEAP® development platform, you can easily address specific business and workflow needs.



imageRUNNER ADVANCE Desktop

Right from your PC

Whether from the imageRUNNER ADVANCE model or your own desk, you have direct access to the functions that help make your work easier. The imageRUNNER ADVANCE Desktop utility features a clear, comprehensive PC interface that transforms your computer into a central command station.

Now you can control personal document workflow by archiving, merging, and distributing from your desktop with “drag-and-drop” ease. You can find documents quickly, and even monitor the status of a job from any location on the network.



Document Feeder



Inner Finisher



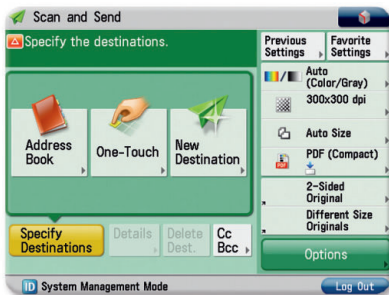
Proximity Card Reader

Scan, send, and collaborate

In today's collaborative world, small businesses, work-groups, and remote offices need to share and distribute documents effortlessly. The imageRUNNER ADVANCE C2030/C2020 models keep information flowing reliably.

Universal Send. In one process, you can scan color and black-and-white documents and immediately distribute them to multiple destinations, such as network folders and e-mail and fax addresses. And now, when you enter the initial letters of a destination, possible candidates from the address book are displayed, eliminating keystrokes to speed up your work.

Universal Send now offers an expanded range of file formats, including High Compression PDF/XPS, Adobe PDF Reader Extensions, Searchable PDF, and Encrypted PDF.



Universal Send Screen

Fax. These imageRUNNER ADVANCE models support up to two fax lines and have the ability to share the fax functions of another model on the same network. And with the Job Forwarding feature, incoming faxes can be automatically routed to other destinations such as an e-mail address or a shared folder on the network.

Work better together

Designed to work seamlessly together, your networked fleet of imageRUNNER ADVANCE systems supports enhanced collaboration. When connected, the imageRUNNER ADVANCE C2030/C2020 models can store and access files in the Advanced Box folders of another imageRUNNER ADVANCE model, and users can also access remote address books.

Versatile print solutions

Canon's proprietary UFR II print technology is standard with these models. Options including Adobe® PostScript® 3™ and PCL 5c/6 are also supported.

Effectively manage and control your print environment with Canon's Driver Configuration Tool. Easily set up drivers that allow selected users to print only in black and white. With the environment in mind, set parameters that limit users to duplex printing. Even enhance security by opting for a forced watermark.



Extensive security options. Valuable management features. Powerful command.

Robust security

The imageRUNNER ADVANCE C2030/C2020 models offer multilayered solutions that help businesses meet their goals of privacy and protection yet keep work flowing. From installation to retirement, this Series has solutions that help safeguard your confidential information and support security compliance.

Access Management System. Control access by user, group, or role. You can even limit access for a specific function, such as Universal Send.

Adobe® LiveCycle® Rights Management ES Integration. Protect access to documents at every stage. After documents are scanned, specify security policies and select authorized recipients.

Trusted Platform Module. Safeguard vulnerable settings, such as passwords, with a new security chip featuring tamper-resistant hardware.

Data Encryption and Erase Options. Disguise information before it's written to the hard drive, and permanently remove it by overwriting when the job is complete.

Removable Hard Disk Drive. With this option, the Hard Disk Drive can be removed and placed in a secure location when not in use.

Centralized control

Control individual models. Remarkably intuitive, the Remote User Interface gives you centralized control right from your desktop. With this easy-to-use Web-based interface, you can access the information for any individual device. Check supply levels, monitor jobs, and stay completely informed.

A fleet of systems. Highly scalable, the imageWARE Enterprise Management Console offers one central point of control for all systems across your organization. This Web-based utility makes it easy to install and manage multiple Canon and third-party networked devices. Uptime is maximized by your ability to monitor jobs and supply levels—even receive e-mail notifications if toner is low or a tray is out of paper.

Security Feature Overview

Document Security

- Document Scan Lock and Tracking*
- Adobe LiveCycle Rights Management ES2 Integration
- Encrypted Secured Print
- Watermark/Secure Watermark
- Copy Set Numbering
- Encrypted PDF
- Digital Signature PDF
- Fax Forwarding
- Fax Destination Confirmation



Mail Server Security

- POP Authentication before SMTP
- SMTP Authentication



Network Security

- IP/MAC Address Filtering
- SSL Encryption
- Network Application On/Off
- USB Port On/Off
- Destination Restriction
- IPSec
- IEEE 802.1x (Wire/Wireless)

Data Security

- Trusted Platform Module
- HDD Data Erase
- HDD Encryption
- Job Log Conceal
- Removable Hard Disk Drive



Logging/Auditing Security

- imageWARE Secure Audit Manager

Authentication

- Department ID/Control Card Systems
- Device Level Log-in (SSO-H)
- Access Management System (AMS)
- Function Level Log-in via AMS
- Authorized Send
- Smart Card Authentication
- Advanced Authentication - Proximity Card*

Note: Some features may be optional.

Outstanding quality. Easy connectivity. True reliability.
All the essentials for success.



Standout performance

Just because your office is small in size doesn't mean you can't enjoy big results. The imageRUNNER ADVANCE C2030/C2020 models give you the edge with the ability to print high-quality documents, right in house. Proposals, reports, brochures, and contracts are a standout in brilliant color or stunning black and white. And with the ability to finish documents effortlessly, you'll stay ahead of the game.

Easy integration

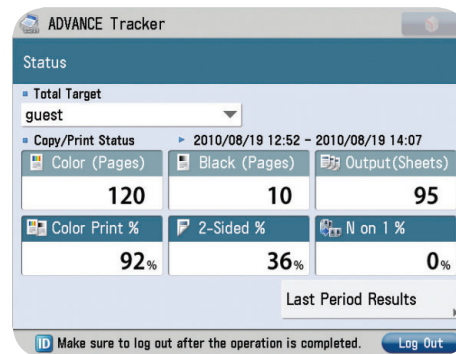
You'll appreciate the seamless integration of these models into your network. Readily save or retrieve files from a networked PC or another imageRUNNER ADVANCE model. If a model is busy, scan or print documents from another on the network. With Remote Fax you can share the fax function of another imageRUNNER ADVANCE system, reducing the cost of maintaining multiple fax devices and lines. Improved connector and link support enhances communication with existing systems and integrates with those you acquire in the future.

Lots of uptime

With the goal of virtually nonstop operation, these compact imageRUNNER ADVANCE C2030/C2020 models are big winners. Their new design and innovative technologies deliver outstanding reliability. Remote service monitoring, automated dispatching, and synchronized hard-drive backup maximize uptime. And with access to the latest technology and straightforward, clear upgrades, you can power through your jobs, giving you more time to devote to other business areas.

A positive bottom line

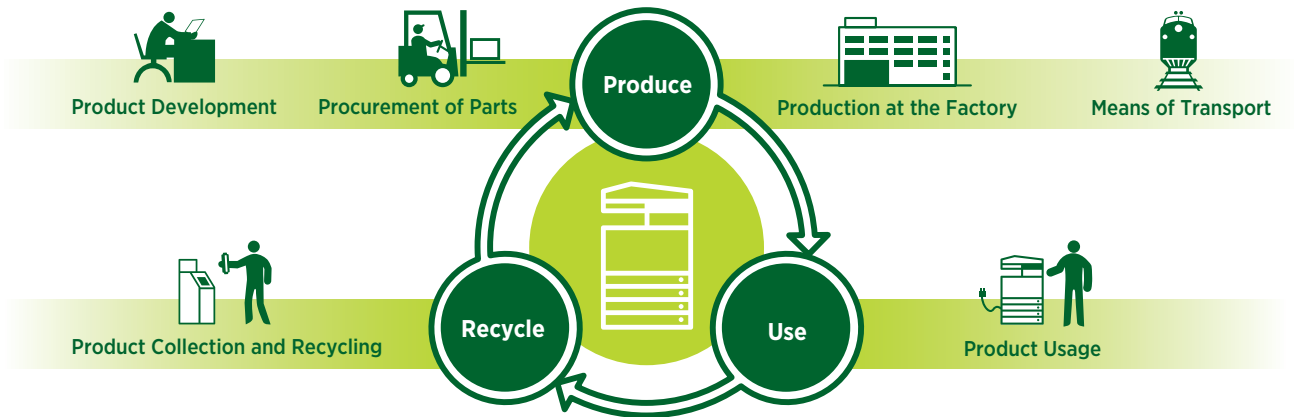
Whether as stand-alone systems for a small business or part of a larger fleet, these models have the advanced features that boost productivity and deliver outstanding professional results—all at an affordable price. And you'll stay firmly in control of the bottom line with Canon's imageRUNNER ADVANCE Tracker* utility. Right from their desktops, administrators can manage all copy/print/scan/fax use. They can even add a message to the model's display screen, reminding users about double-sided or black-and-white printing. From every point of view, the imageRUNNER ADVANCE C2030/C2020 models make sense.



imageRUNNER ADVANCE Tracker screen on control panel

* Included with imageRUNNER ADVANCE Essentials.

Solutions that propel your business while reducing our environmental footprint—and yours.



Reduction of CO₂ emissions

Through its Life Cycle Assessment (LCA) System, Canon has lowered CO₂ emissions by more than 30% over previous models by focusing on each stage of the product life cycle, including manufacturing, energy use, and logistics. These products are designed to be compact with less packaging, to make transportation more efficient.

Eco-friendly design

Canon is making a difference through creative ecological thinking. The imageRUNNER ADVANCE models employ certain components fabricated with 100% recycled plastic from retired products. Canon's innovative green technologies also include bio-based plastic, a plant-derived compound that replaces certain petroleum-based plastic parts.

A greener way to work

A visionary company, Canon knows that the world and the workplace need a greener workflow. The imageRUNNER ADVANCE Series delivers just that. Now organizations across the globe can seamlessly share and distribute digital documents. And because you can preview files prior to printing, changes can be made before committing toner to paper to avoid print errors. Administrators can even encourage duplex printing to help reduce waste and save paper throughout the enterprise.

Greater energy efficiency

From the inside out, the imageRUNNER ADVANCE Series is designed for high energy efficiency and stellar performance. The combination of Canon's fusing technologies and new pQ toner helps reduce overall energy consumption by minimizing heat and power requirements. The Automatic Document Feeder captures superb-quality images at impressive speeds while using less energy than ever. Canon's RAPID Fusing Technology helps reduce power use. And when devices are in Sleep Mode, power consumption is 1W or less. With advanced technologies present in each model, the Series meets ENERGY STAR® standards.

Reducing pollution

All suppliers are required to meet our stringent Green Procurement policy and environmental terms. This helps Canon exceed the toughest global standards set by the EU RoHS Directive, which requires the restriction of six specified hazardous substances. Canon currently restricts the use of 33 such substances.

Advance your business with these optional accessories.

Finishing Options

Inner Finisher-C1 with optional Inner Finisher Additional Tray-A1

- 750-sheet capacity*
- Corner and double stapling up to 50 sheets

Output Options

Inner 2-way Tray-F1

- Upper tray: 250-sheet capacity
- Lower tray: 200-sheet capacity

Copy Tray-J1

- 100-sheet capacity



Printer Options**

PCL Printer Kit-AG1

PS Printer Kit-AG1

Direct Print Kit (for PDF/XPS)-H1

Security Options

Universal Send Security Feature Set-D1

Universal Send Digital User Signature Kit-C1

Encrypted Secure Print Software-D1

Secure Watermark-B1

Document Scan Lock Kit-A3†

Data Erase Kit-C1

HDD Data Encryption Kit-C3

Removable HDD Kit-AE1

IPSec Board-B2††



Paper Feeding Options

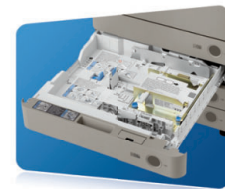
Cassette Feeding Unit-AF1

- 550-sheet x 2-cassette capacity
- 17 lb. Bond to 60 lb. Cover
- Supports up to 12" x 18"

Envelope Feeder Attachment-D1

- 50-sheet capacity
- Supports COM10 No.10, Monarch, DL, ISO-C5

Cabinet Type-D



Accessibility Options

Remote Operator's Software Kit-B1

Voice Operation Kit-C2

Voice Guidance Kit-F2

Braille Label Kit-F1

ADF Access Handle-A1



* 450-sheet capacity when Inner Finisher Additional Tray-A1 is attached.

** UFR II standard.

† Check with your Canon Authorized Dealer for availability.

†† Requires Expansion Bus-F2.

Note: For additional options and specifications, please refer to the back page.

Some options may not be available at time of launch. Please check with your Canon Authorized Dealer for availability.

Product Specifications

Main Unit

Operation Panel	
5.7" VGA Full Color TFT Screen	
Memory	
Standard:	2GB RAM
Maximum:	2GB RAM
Hard Disk Drive	
Standard:	80GB
Maximum:	80GB
Network Interface Connection	
Standard:	10/100Base-TX 1000Base-TX
Optional:	Wireless LAN (IEEE 802.1X)
Other Interface	
Standard:	USB 2.0 (Host)x2 USB 2.0 (Device)
Optional:	Device Port [USB 2.0 (Host)x2] Copy Control Interface
Copy/Print Output Speed (BW/Color)	
Letter:	C2030: Up to 30/30 ppm C2020: Up to 20/20 ppm
First-Copy-Out Time (Letter)	
BW:	5.9 Seconds
Color:	8.9 Seconds
Paper Sources (20 lb. Bond)	
Standard:	250-sheet Cassette 550-sheet Cassette 100-sheet Stack Bypass
Maximum:	2,000 Sheets
Output Paper Capacity (20 lb. Bond)	
Standard:	250 Sheets (Inner Tray)
Maximum:	850 Sheets (w/Inner Finisher and Copy Tray)
Output Paper Sizes	
Cassette 1:	11" x 17", Legal, Letter, Letter-R, Statement-R, Executive, Custom Size [5-7/8" x 7-1/8" to 11-3/4" x 16-1/2" (148mm x 182mm to 297mm x 420mm)]
Cassette 2-4:	12" x 18", 11" x 17", Legal, Letter, Letter-R, Statement-R, Executive, Custom Size [5-1/2" x 7-1/8" to 12" x 15-3/8" (140mm x 182mm to 304mm x 457mm)]
Bypass:	12" x 18", 11" x 17", Legal, Letter, Letter-R, Statement, Statement-R, Executive, Custom Size [3-7/8" x 5-1/2" to 12-5/8" x 18" (99mm x 140mm to 320mm x 457mm)]
Acceptable Paper Weights	
Cassette 1:	17 lb. Bond to 32 lb. Bond (64 to 120g/m ²)
Cassette 2-4:	17 lb. Bond to 60 lb. Cover (64 to 163g/m ²)
Bypass:	17 lb. Bond to 80 lb. Cover (64 to 220g/m ²)

Warm-up Time	
From Power On:	38 Seconds
Power Requirements/Plug	
120V AC, 60Hz, 7.5A/NEMA 5-15P	
Dimensions (H x W x D)	
36-1/2" x 22-1/4" x 26-3/4" (928mm x 565mm x 680mm)	
Installation Space (W x D)	
33-1/4" x 26-3/4" (846mm x 680mm) (When the Stack Bypass Tray is extended)	
Weight	
Approximately 209 lb. (95kg)*	
Toner (Estimated Yield @ 5% Coverage)	
Black:	23,000 images
Color (C,M,Y):	19,000 images

Image Reader Unit	
Scan Resolution	
Up to 600 x 600 dpi	
Acceptable Originals	
Sheet, Book, 3-Dimensional objects [Up to 4.4 lb. (2kg)]	
Maximum Original Size	
Up to 11" x 17"	

Document Feeder	
Scan Method	
Duplex Automatic Document Feeder	
Acceptable Originals	
Paper Sizes: 11" x 17", Legal, Letter, Letter-R, Statement, or Statement-R	
Scan Speed (BW/Color; Letter)	
Simplex:	44/44 ipm (300 dpi) 30/30 ipm (600 dpi)
Duplex:	19/19 ipm (300 dpi) 13/13 ipm (600 dpi)
Paper Capacity (20 lb. Bond)	
50 Sheets	

Print Specifications	
Maximum Engine Resolution	
1200 x 1200 dpi**	
PDL Support	
Standard:	UFR II
Optional:	PCL 5c/6, Adobe® PostScript® 3™
Print Driver Supported OS	
UFR II, PCL 5c/6, Adobe PS3:	Windows® (Windows 2000/XP/Windows Vista®/7/Server 2003/Server 2008), Citrix MetaFrame, Macintosh® (OS X 10.2.8 or Later)
XPS:	Windows (Windows Vista/7/Server 2003/Server 2008)
Direct Print Support	
Standard:	TIFF, JPEG, EPS***
Optional:	PDF, XPS***

Universal Send Specifications

Sending Method	
E-Mail, I-Fax, File Server (FTP, SMB, WebDAV), Super G3 Fax (Optional)	
Communication Protocol	
File:	FTP (TCP/IP), SMB (TCP/IP), WebDAV
E-mail/I-Fax:	SMTP, POP3, I-Fax (Simple, Full)
File Format	
Standard:	TIFF, JPEG, PDF, PDF (Compact), PDF (Apply Policy), PDF (Optimized for Web), PDF/A-1b, XPS, XPS (Compact)
Optional:	PDF (Trace & Smooth), PDF/XPS (OCR), PDF (Encrypted), PDF/XPS (Digital Signature), PDF (Reader Extensions)

Fax Specifications

Maximum Number of Connection Lines	
2	
Modem Speed	
Super G3:	33.6 Kbps
G3:	14.4 Kbps
Compression Method	
MH, MR, MMR, JBIG	
Sending/Recording Size	
Statement to 11" x 17"	

Store Specifications

Memory Media	
Standard:	USB Memory
Optional:	SD, SDHC, CompactFlash, Memory Stick, Microdrive

Security Specifications

Standard	
Department ID Management, Single Sign On-H, Access Management System (Device and Function Level log-in), Secured Print, Trusted Platform Module, IPV6, Restricting Features (Restricting the Send Function, Restricting New Addresses on Address Book), SSL Encrypted Communication, SNMPv1/v3, MAC/IP Address Filtering, SMTP Authentication, POP Authentication before SMTP, HDD Format, Adobe® LiveCycle® Rights Management ES2 Integration	

Other Optional Accessories

- Utility Tray-A2
- USB Keyboard
- Copy Card Reader-C1
- Copy Card Reader Attachment-B2
- Copy Control Interface Kit-A1
- Stamp Ink Cartridge-C1
- Stamp Unit-B1
- imageRUNNER ADVANCE Essentials
- Barcode Printing Kit-D1
- Web Access Software-H1
- Universal Send Advanced Feature Set-E1
- Super G3 FAX Board-AH1
- Super G3 2nd Line FAX Board-AH1
- Remote Fax Kit-A1
- Wireless LAN Board-B2
- USB Device Port-C1
- Multimedia Reader/Writer-A2
- Expansion Bus-F2
- eCopy Suite
- imageWARE Suite

- * Includes consumables.
- ** If 1200 dpi is selected, engine speed will slow down.
- *** EPS and XPS cannot be printed from Memory Media.

Note: Some accessories require additional equipment or may be prerequisites for other options. Some accessories cannot be installed simultaneously. Check with your Canon Authorized Dealer for details.



As an ENERGY STAR® Partner, Canon U.S.A., Inc. has determined that these products meet the ENERGY STAR guidelines for energy efficiency. ENERGY STAR and the ENERGY STAR mark are registered U.S. marks. CANON, IMAGERUNNER, IMAGEPASS, MEAP, and the GENUINE logo are registered trademarks of Canon Inc. in the United States and may also be registered trademarks or trademarks in other countries. IMAGEWARE is a registered trademark of Canon U.S.A., Inc. in the United States and is a trademark of Canon Inc. in certain other countries. IMAGEANYWARE is a trademark of Canon. All other referenced product names and marks are trademarks of their respective owners and hereby acknowledged. Some items may not be available at this time; please check for availability. Specifications and availability subject to change without notice. All printer output images are simulated. Products are shown with optional accessories.

Canon U.S.A. does not provide legal counsel or regulatory compliance consultancy, including without limitation, Sarbanes Oxley, HIPAA, GLBA, Check 21 or the USA Patriot Act. Each customer must have its own qualified counsel determine the advisability of a particular solution as it relates to regulatory and statutory compliance.

©2010 Canon U.S.A., Inc. All rights reserved.

Federal Law prohibits copying of certain documents. Violators may be subject to penalties. We suggest that you check with your own legal counsel. Canon U.S.A., Inc. and Canon Canada, Inc. intend to cooperate with Law Enforcement Agencies in connection with claims of unauthorized copying.



0147W458
0910-C2000SR5-50M-LTM

1-800-OK-CANON
www.usa.canon.com

Canon U.S.A., Inc.
One Canon Plaza
Lake Success, NY 11042

