

**Canon**



**imageRUNNER**  
ADVANCE

**C7065**  
**C7055**

multifunction printer  
high speed, high volume  
color/black and white

OFFICE SOLUTIONS




advancing business





## imageRUNNER ADVANCE



# C7065 C7055

 Copy/Print/Send/Fax/Store

 Up to 13" x 19-1/4"

 1200 x 1200 dpi

 Color

### Exceptional power

- > Advanced imageCHIP system architecture
- > 80GB HDD standard; up to 1TB HDD
- > 2GB RAM standard, 2.5GB RAM maximum

### Impressive speed

- > Up to 65/60 ppm (C7065) and 55/55 ppm (C7055) (BW/Color; Letter)
- > Up to 200-/140-ipm single-pass duplex scanning at 300 dpi (BW/Color)

### Robust paper handling

- > Up to 6,900-sheet maximum paper capacity
- > 14 lb. Bond to 110 lb. Cover
- > Plain, heavy, coated, tabs, envelopes

### Flexible in-line finishing options

- > Multiposition stapling, booklet-making, 2- and 3-hole punching
- > Document insertion and folding (C-fold/Z-fold)

### Enhanced collaboration

- > Advanced Box document sharing solution
- > Standard Universal Send
- > Adobe® PDF formats
- > Scan/print via USB

### imageRUNNER ADVANCE Essentials

- > imageRUNNER ADVANCE Desktop
- > imageRUNNER ADVANCE Tracker
- > Workflow Composer and Connectors

### Strong environmental focus

- > ENERGY STAR® qualified
- > Reduction of CO<sub>2</sub> emissions in manufacturing process
- > Exceeds EU RoHS Directive standards

More than just high speed, high volume, high performance. Now there's a dramatically better way to work.

**Move into the future**

Not until now have powerful productivity, user-centric control, impressive quality, and dynamic workflow looked so good. Beyond the sleek body and soothing color tones of the Canon imageRUNNER® ADVANCE C7065/C7055 models lies what could be one of the most significant investments in your business.

**Powerful productivity at every turn**

With outstanding speed and efficiency, the imageRUNNER ADVANCE C7065/C7055 models meet the needs of large workgroups that demand robust performance. Rapidly scan, print, copy, fax, and distribute documents with precision in both color and black and white, while multiple in-line finishing options ensure a professional look for every job.

**User-centric from all viewpoints**

Users will be delighted by the friendly interface and their ability to access functions with ease. IT administrators will applaud the new centralized device management solutions and vigorous security features. And business owners will value automated workflow options that boost productivity and help reduce costs.

**Smooth workflow, dynamite results**

Today, business requires us to do higher-quality work in less time. The imageRUNNER ADVANCE C7065/C7055 models make this easy with a range of collaboration tools, streamlined one-step operations for complicated tasks, and the power to perform multiple jobs concurrently.

**Even greener**

Canon's commitment to protecting and sustaining the environment is stronger than ever. With the imageRUNNER ADVANCE Series, Canon has incorporated new green technologies that further conserve energy and resources, reduce CO<sub>2</sub> emissions, and help prevent pollution.

**A truly advanced partner**

Great partnerships deliver a strong competitive advantage. The imageRUNNER ADVANCE C7065/C7055 models offer cutting-edge tools and resources that allow you to do better work more rapidly. This gives you the opportunity to focus on the powerful ideas that will advance your business—now and in the future.



# World-class efficiency, outstanding quality, amazing ease. Inspired innovation.

## A beautiful way to work

The imageRUNNER ADVANCE C7065/C7055 models are designed to offer a multitude of resources in a space-saving footprint. The warm, natural color palette integrates seamlessly into any office environment, and the smartly designed new TFT control panel is comfortable and easy to use.

## Power for exceptional performance

Accomplish multiple tasks concurrently with the exceptional speed your work demands. These imageRUNNER ADVANCE models incorporate Canon's new Advanced imageCHIP system architecture, which uses two processors to deliver outstanding multitasking performance.

The image processor board works with the scanner, adjusts image size, and ensures superb image quality and super-fast processing. The information processor board controls the user interface and coordinates device networking and connectivity.



## Simpler, more intuitive operation

Completely redesigned, the highly responsive, flexible user interface is all about simplicity and ease. The imageRUNNER ADVANCE C7065/C7055 models have a range of features that allow users to accomplish so much more in so much less time.

**Size.** The large 8.4" full-color, high-resolution TFT screen boasts wide viewing angles and exceptional clarity. An optional upright 10.4" screen with a movable arm is also available.

**Menus.** Two menus streamline your workflow. Just a stroke of the Main Menu keys gives you instant access to system functions. The Quick Menu powers productivity by allowing you to combine and access routine tasks at the touch of just one button.

**Customization.** Organize the onscreen buttons to fit the way you work by determining their number, size, and layout. And you can even select an onscreen background.

**Tutorial.** If users have "how to" questions, these Canon imageRUNNER ADVANCE models have a tutorial button right on the screen. Quickly access simple step-by-step instructions.



**Main Menu**  
Customize the number, size, and layout of the function buttons, and select a background.



**Quick Menu**  
Combine and access commonly performed tasks with just one button.

**Wallpaper**  
Choose from a palette of background designs.



### A brilliant impression

Canon's next-generation imaging solutions incorporate stunning image quality with amazing speed. With 1200 x 1200 dpi print resolution, text is sharp with smooth corners and images have subtle gradient transitions. Innovative technologies, including Canon's fine-grained pQ toner, produce rich, clear, vivid images with a smooth, high-quality finish.

### Stellar productivity

Canon has raised the bar on productivity and cost control with imageRUNNER ADVANCE Essentials—specially created solutions that seamlessly connect the MFP to the user. Now right from their PCs, users can perform personal document workflow tasks. Productivity is enhanced by assigning complicated tasks to a single button. Administrators can track and manage use and even influence behavior. And with amazing ease, the imageRUNNER ADVANCE C7065/C7055 models can quickly link to your external systems.

### Walk-up convenience

The imageRUNNER ADVANCE C7065/C7055 models are designed to make your work easier. Now you can scan to, or print from, a USB thumb drive. Even expand connectivity options to include memory media such as an SD card or CompactFlash card.\* To enter data more comfortably, an optional keyboard may be attached.



USB Memory Media

Keyboard

### Keep running

With the imageRUNNER ADVANCE C7065/C7055 models, you're assured the ongoing productivity your business demands. Status notifications keep you ahead of the game, and toner and paper can even be replaced on-the-fly. And if the correct paper size or stock for a job is unavailable, the system can begin the next job without delay to help maximize uptime.



Toner bottles

\*Requires optional equipment.

## ADVANCED WORKFLOW

Simple operation, seamless integration.  
A forward-thinking approach to keep work flowing.

### Accelerated performance

High-volume office environments demand powerful performance and versatility. On every count the imageRUNNER ADVANCE C7065/C7055 systems deliver.

**Start up.** Shorter warm-up and faster first-copy times quickly get you up to speed.

**Scanner.** The 300-sheet capacity, ultra-fast single-pass duplex scanner rapidly converts paper documents to digital files.

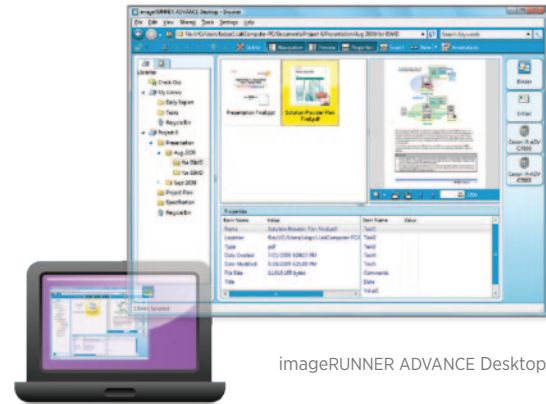
**Send.** Files move at an outstanding pace across the network with Universal Send and formats such as High Compression PDF/XPS, which significantly reduces file sizes.

**Processing.** Large color files and complex print jobs are easily and rapidly processed with the new system architecture.

**Finishing.** A choice of modular in-line accessories makes professionally finishing documents simple.

### Smart productivity

With a wide range of software solutions, Canon gives your business the edge in saving time, reducing costs, and improving quality. The Workflow Composer utility reduces multistep and frequently performed operations to the touch of one button on the Quick Menu. You can name interface buttons to match your business processes. And with Canon's MEAP® development platform, you're able to take advantage of adding applications to extend your capabilities.



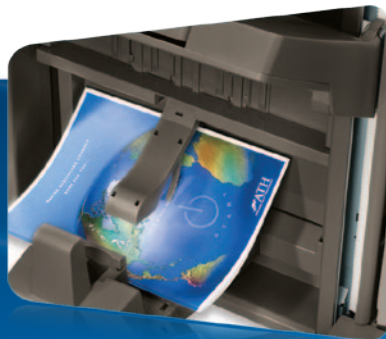
imageRUNNER ADVANCE Desktop

### Right from your PC

Whether from the imageRUNNER ADVANCE model or your own desk, you can have direct access to the functions that make your work easier. The imageRUNNER ADVANCE Desktop utility features a clear, comprehensive PC interface that transforms your computer into a central command station. Now you can perform personal document workflow tasks, such as archiving, merging, and distributing, all from the desktop with “drag-and-drop” simplicity. You can also search for documents with ease, and even monitor the status of your work from any location on the network.



Single-Pass Duplexing Document Feeder



Booklet Finisher



Paper Folding Unit



### Scan, store, and collaborate

Designed to streamline workflow and meet each user's needs, these models let you easily save, store, and access scanned documents in different locations. Simply select a destination and scan the original. Using built-in spaces like Mail Box and Advanced Box, or external spaces such as memory media or another networked location, you can choose the most efficient way to work.

**Advanced Box.** Canon's new built-in document sharing solution enhances the ability of multiple users to collaborate. Files can be stored in Advanced Box shared folders and accessed from multiple locations including a PC or other networked imageRUNNER ADVANCE systems. When privacy is required, files can be saved to personal folders.

### Scan, send, and collaborate even more

In today's collaborative business environment, people need to share and distribute documents to multiple network destinations. With the imageRUNNER ADVANCE C7065/C7055 models, Canon makes this exceptionally easy.

**Universal Send.** In one simple operation, you can distribute scanned documents to multiple destinations, such as e-mail and fax destinations and network folders. Now Universal Send provides functionality with an expanded range of file formats, including High Compression PDF/XPS, Adobe PDF Reader Extensions, Searchable PDF, and Encrypted PDF.

**Fax.** Readily handle large volumes of fax documents and keep information flowing. These imageRUNNER ADVANCE models now support up to four fax lines and have the ability to share the fax function of another imageRUNNER ADVANCE model on the same network. With the Job Forwarding feature, incoming faxes can be automatically routed to other systems, users, or destinations, including the Advanced Box file sharing space.

### Extensive print solutions

Canon's proprietary UFR II print technology is standard with these models. Options including Adobe® PostScript® 3™ and PCL 5c/6 are also supported.

Enhance print productivity for multiuser, color-intensive environments with Canon's imagePASS and ColorPASS\* print controllers. With advanced job and color management tools, you'll enjoy efficient workflow and outstanding output.

Today users want more control over their print environment. Canon's new Driver Configuration Tool delivers just that by allowing you to set specific defaults and custom profiles. You can control costs by selecting easy-to-use features such as duplex printing or enhance security by opting for a forced watermark.

The imageRUNNER ADVANCE models now support spot color matching with PANTONE® certification. With the named color profile\* for PANTONE, it will help graphic-intensive environments achieve the highest color output quality along with consistent color management from creation to print.



ColorPASS-GX300 print controller with Integrated Interface and Stand-A1

\*Requires the Canon PS Printer Kit-AD1. Named color profiles refer to profiles compatible with the colors found within the current PANTONE MATCHING SYSTEM® and PANTONE Goe™ System Coated Publications.

# With productivity paramount and security vital, Canon offers powerful management solutions.

## Robust security

The imageRUNNER ADVANCE C7065/C7055 models offer multilayered solutions that help businesses meet their goals of privacy and protection yet keep work flowing. From installation to retirement, this Series has solutions that safeguard your confidential information and support security compliance.

**Access Management System.** Limit access by user, group, or role. You can even limit access only for specific functions such as Universal Send.

**Document Scan Lock and Tracking.** Embed hidden tracking information in a document to restrict unauthorized copying or scanning, and to track the origin.

**Adobe® LiveCycle® Rights Management ES2 Integration.** Protect access to documents throughout their duration. After documents are scanned, specify security policies and select authorized recipients.

**Trusted Platform Module.** Safeguard vulnerable settings such as passwords with a new security chip featuring tamper-resistant hardware.

**Data Encryption and Erase Options.** Disguise information before it's written to the hard drive, and permanently remove it by overwriting when the job is complete.

**Removable Hard Disk Drive.** With this option, the Hard Disk Drive can be removed and placed in a secure location when not in use.

## Centralized control

**Control individual models.** Remarkably intuitive, the Remote User Interface gives you centralized control right from your desktop. With this easy-to-use Web-based interface, you can access the information for any individual device. Check supply levels, monitor jobs, and stay completely informed.

**A fleet of systems.** Highly scalable, the imageWARE Enterprise Management Console offers one central point of control for all systems across your organization. This Web-based utility makes it easy to install and manage multiple Canon and third-party networked devices. Uptime is maximized by your ability to monitor jobs and supply levels—even receive e-mail notifications if toner is low or a tray is out of paper.

### Security Feature Overview

#### Document Security

- Document Scan Lock and Tracking
- Adobe LiveCycle Rights Management ES2 Integration
- Encrypted Secured Print
- Watermark/Secure Watermark
- Copy Set Numbering
- Encrypted PDF
- Digital Signature PDF
- Fax Forwarding
- Fax Destination Confirmation



#### Mail Server Security

- POP Authentication before SMTP
- SMTP Authentication



#### Network Security

- IP/MAC Address Filtering
- SSL Encryption
- Network Application On/Off
- USB Port On/Off
- Destination Restriction
- IPSec
- IEEE 802.1x (Wire/Wireless)

#### Data Security

- Trusted Platform Module
- HDD Data Erase and Encryption
- Advanced Box Security
- Mail Box Password Protection
- Job Log Conceal
- Removable Hard Disk Drive



#### Authentication

- Department ID/Control Card Systems
- Device Level Log-in (SSO-H)
- Access Management System (AMS)
- Function Level Log-in via AMS
- Authorized Send
- Smart Card Authentication

#### Logging/Auditing Security

- imageWARE Secure Audit Manager

Note: Some features may be optional.



Professional capabilities, true collaboration, and incredible reliability – an impressive return on investment.



### Rise above the crowd

Give your business a competitive edge by conveniently producing professional-quality presentations, reports, and newsletters. Without expensive outsourcing, you can generate accurate, high-impact color or crisp black-and-white results on demand, right in house. With the flexible finishing capabilities available on the imageRUNNER ADVANCE C7065/C7055 models, the possibilities are almost endless.

### Easy integration

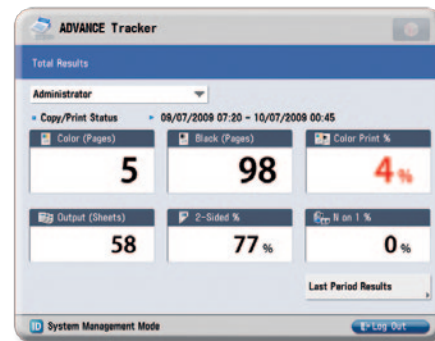
You'll appreciate the seamless integration of these models into your network. Readily save or retrieve files from a networked PC or another imageRUNNER ADVANCE model. If a model is busy, scan or print documents from another on the network. With Remote Fax you can share the fax function of another imageRUNNER ADVANCE system, reducing the cost of maintaining multiple fax devices and lines. Improved connector and link support enhances communication with existing systems and integrates with those you acquire in the future.

### Lots of uptime

Canon builds in signature reliability. Because Canon offers remote service monitoring, automated dispatching, a synchronized hard-drive backup, and on-the-fly replacement of supplies, users can count on virtually nonstop operation. And with access to the latest technology and simple, clear upgrades, you can power through your jobs, giving you more time to devote to other business areas.

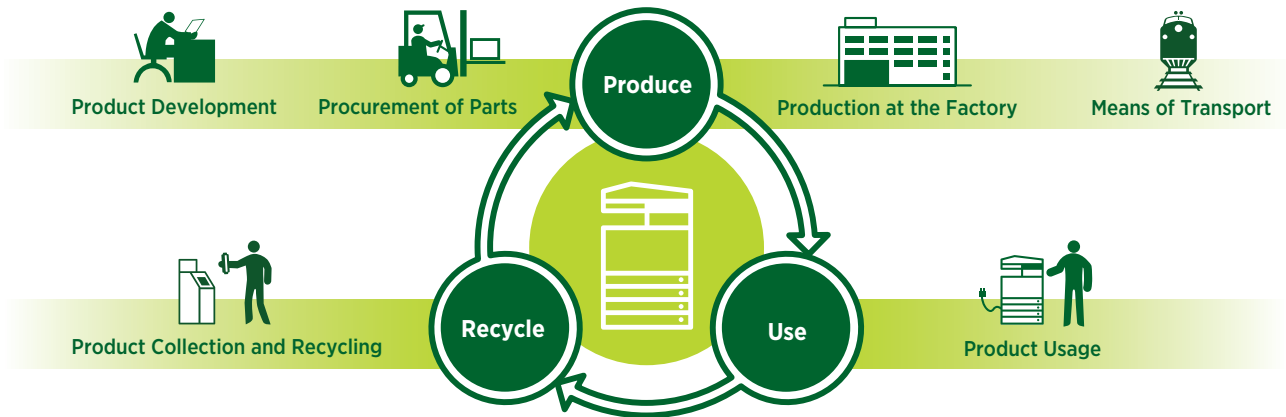
### A positive bottom line

Cost-savings are more crucial than ever. Now with Canon's imageRUNNER ADVANCE Tracker\* utility, you have the power to identify, evaluate, and manage print costs. View usage, analyze color output, or encourage double-sided printing right from your desktop. Allocate costs by department, project, or client. With the ability to monitor multiple networked devices and receive automated e-mail reports, you'll stay firmly in control of the bottom line.



imageRUNNER ADVANCE Tracker screen on control panel

Solutions that propel your business while reducing our environmental footprint—and yours.



Canon Product Life Cycle

### Reduction of CO<sub>2</sub> emissions

Through its Life Cycle Assessment (LCA) System, Canon has lowered CO<sub>2</sub> emissions by more than 30% over previous models by focusing on each stage of the product life cycle, including manufacturing, energy use, and logistics. These products are designed to be compact, with less packaging to make transportation more efficient.

### Eco-friendly design

Canon is making a difference through creative ecological thinking. The imageRUNNER ADVANCE models employ certain components fabricated with 100% recycled plastic from retired products. Canon's innovative green technologies also include bio-based plastic, a plant-derived compound that replaces certain petroleum-based plastic parts.

### A greener way to work

A visionary company, Canon knows that the world and the workplace need a greener workflow. The imageRUNNER ADVANCE Series delivers just that. Now organizations across the globe can seamlessly share and distribute digital documents. And because you can preview files prior to printing, changes can be made before committing toner to paper to avoid print errors. Administrators can even encourage duplex printing to help reduce waste and save paper as well as optimize color usage throughout the enterprise.

### Greater energy efficiency

From the inside out, the imageRUNNER ADVANCE Series is designed for high energy efficiency and stellar performance. The combination of Canon's fusing technologies and new pQ toner helps to reduce overall energy consumption by minimizing heat and power requirements. The Series' new duplex color image reader captures superb-quality images at impressive speeds while using less energy than ever. Canon's new Induction Heating Fusing System reduces power use in digital multifunction systems by up to an astonishing 30% over previous models.\* And when devices are in Sleep Mode, power consumption is 1W or less. With advanced technologies present in each model, the Series meets ENERGY STAR® standards.

### Reducing pollution

All suppliers are required to meet Canon's stringent Green Procurement policy and environmental terms. This helps Canon exceed the toughest global standards set by the EU RoHS Directive, which requires the restriction of six specified hazardous substances. Canon currently restricts the use of 33 such substances.

An extensive range of optional accessories to advance your business.

### Finishing Options

#### Booklet Finisher-B1

- 3-tray, 4,000-sheet capacity
- Corner and double stapling up to 50 sheets
- Booklet-making up to 16 sheets

#### Document Insertion Unit-J1\*

- Insert preprinted sheets
- Up to 13" x 19"
- 1-tray, 100-sheet capacity

#### External 2/3-Hole Puncher-A1\*

- 2- and 3-hole punching

#### Staple Finisher-B1

- 3-tray, 4,000-sheet capacity
- Corner and double stapling up to 50 sheets



#### Document Insertion Folding Unit-G1\*

- Insert preprinted sheets
- Up to 13" x 19"
- 1-tray, 100-sheet capacity
- Z-fold, C-fold



### Paper Feeding Options

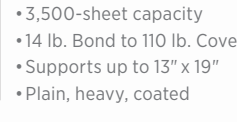
#### Paper Deck Unit-A1

- 3,500-sheet capacity
- 14 lb. Bond to 80 lb. Cover
- Supports letter-sized paper
- Plain, heavy



#### POD Deck Lite-A1

- 3,500-sheet capacity
- 14 lb. Bond to 110 lb. Cover
- Supports up to 13" x 19"
- Plain, heavy, coated



### Printer Options\*\*

#### PCL Printer Kit-AD1

#### PS Printer Kit-AD1

#### Direct Print Kit (for PDF/XPS)-H1

#### imagePASS-A1

- Intel® Core™2 Duo T2500 2.0GHz Processor
- 512MB RAM, expandable to 1GB
- 80GB Hard Disk
- Adobe PS 3/PCL 5c/PCL 6

#### ColorPASS-GX300



- Intel Core2 Duo Xeon E8400 2 x 3.0GHz Processor
- 2GB RAM standard
- 160GB Hard Disk
- Adobe PS 3

### Usability Options

#### Upright Control Panel-A1

- 10.4" TFT high-resolution touch-screen
- Tilt-and-swivel capability
- Customizable UI screen

#### USB Keyboard

- External keyboard
- Connects via USB interface
- Use with Utility Tray-A1



### Security Options

#### Universal Send Security Feature Set-D1

#### Universal Send Digital User Signature Kit-C1

#### Encrypted Secure Print-D1

#### Secure Watermark-B1

#### Document Scan Lock Kit-A1

#### Data Erase Kit-C1

#### HDD Data Encryption and Mirroring Kit-C1

#### Removable HDD Kit-AB1

#### IPSec Board-B2

### Accessibility Options

#### Remote Operator's Software Kit-B1

#### Voice Operation Kit-C1

#### Voice Guidance Kit-F1

#### Braille Label Kit

#### ADF Access Handle-A1



**Note:** For additional options and specifications, please refer to the back page.

\*Requires Staple Finisher-B1 or Booklet Finisher-B1.  
\*\* UFR II standard.

# Product Specifications

## Main Unit

<b>Operation Panel</b>	
Standard:	8.4" SVGA Full-color TFT Screen
Optional:	10.4" SVGA Full-color TFT Upright Screen

<b>Memory</b>	
Standard:	2GB RAM
Maximum:	2.5GB RAM

<b>Hard Disk Drive</b>	
Standard:	80GB
Maximum:	1TB

<b>Network Interface Connection</b>	
Standard:	10/100/1000Base-TX
Optional:	Wireless LAN (IEEE 802.1x)

<b>Other Interface</b>	
Standard:	USB 2.0 (Host)x2 USB 2.0 (Device)
Optional:	Device Port: [USB 2.0 (Host)x2], Serial Interface, Copy Control Interface

<b>Copy/Print Speed (BW/Color; Letter)</b>	
<b>C7065:</b>	Up to 65/60 ppm
<b>C7055:</b>	Up to 55/55 ppm

<b>First-Copy-Out Time (Letter)</b>	
B/W:	4.9 Seconds
Color:	6.6 Seconds

<b>Paper Sources (20 lb. Bond)</b>	
Standard:	Dual 1,100-sheet Drawers Dual 550-sheet Cassettes 100-sheet Stack Bypass
Maximum:	6,900 Sheets

<b>Output Paper Capacity (20 lb. Bond)</b>	
Standard:	250 Sheets (with Copy Tray)
Maximum:	4,000 Sheets (with Staple Finisher or Booklet Finisher)

<b>Output Paper Sizes</b>	
Drawers:	Letter
Cassettes:	13" x 19", 12" x 18", 11" x 17", Legal, Letter, Letter-R, Executive, Statement-R, Custom Size (5-1/2" x 7-1/8" to 13" x 19-1/4")
Bypass:	13" x 19", 12" x 18", 11" x 17", Legal, Letter, Letter-R, Executive, Statement-R, Custom Size (4" x 5-7/8" to 13" x 19-1/4")

<b>Acceptable Paper Weights</b>	
Drawers/	14 lb. Bond to 80 lb. Cover
Cassettes:	(52 to 220g/m <sup>2</sup> )
Bypass:	14 lb. Bond to 110 lb. Cover (52 to 300g/m <sup>2</sup> )

<b>Warm-up Time</b>	
	5 Minutes from Power On

<b>Power Requirements/Plug</b>	
	120V AC, 60Hz, 20A/NEMA 5-20P

<b>Dimensions (H x W x D)</b>	
	48-1/8" x 27-1/8" x 36-3/4" (1221mm x 689mm x 932mm)

<b>Installation Space (W x D)</b>	
	64-3/4" x 64" (1644mm x 1624mm) (when Copy Tray and Stack Bypass are extended)

<b>Weight</b>	
	Approx. 708.9 lb.*

<b>Toner (Estimated Yield @ 5% Coverage)</b>	
Black:	80,000 Images
Color (C,M,Y):	52,000 Images

## Image Reader Unit

<b>Scan Resolution</b>	
	Up to 600 x 600 dpi

<b>Acceptable Originals</b>	
	Sheet, Book, 3-Dimensional Objects [Up to 4.4 lb. (2kg)]

<b>Maximum Original Size</b>	
	Up to 11" x 17"

## Document Feeder

<b>Scan Method (Standard)</b>	
	Single-pass Duplexing Automatic Document Feeder

<b>Acceptable Originals</b>	
Paper Size:	11" x 17", Legal, Letter, Letter-R, Statement, or Statement-R

<b>Scan Speed (B/W, Color; Letter)</b>	
Simplex:	120/120 ipm (300 dpi) 120/70 ipm (600 dpi)
Duplex:	200/140 ipm (300 dpi) 120/70 ipm (600 dpi)

<b>Paper Capacity (20 lb. Bond)</b>	
	300 Sheets

## Print Specifications

<b>Engine Resolution</b>	
	1200 x 1200 dpi

<b>PDL Support</b>	
Standard:	UFR II
Optional:	PCL 5c, PCL 6, Adobe PS 3

<b>Print Driver Supported OS</b>	
UFR II,	Windows® (Windows 2000/ XP/Server 2003/Server 2008/ Windows Vista®/Windows 7), Citrix MetaFrame, Macintosh® (OS X 10.4.9 or later)
Adobe PS 3:	Windows (Windows 2000/XP/ Server 2003/Server 2008/ Windows Vista/Windows 7), Citrix MetaFrame
PCL 5c/6:	Windows (Windows 2000/XP/ Server 2003/Server 2008/ Windows Vista/Windows 7), Citrix MetaFrame

XPS:	Windows Vista, Windows Server 2008, Windows 7
------	--

<b>Direct Print Support</b>	
Standard:	TIFF, JPEG, EPS**
Optional:	PDF, XPS**

## Universal Send Specifications

<b>Sending Method</b>	
	E-mail, I-Fax, File Server (FTP, SMB, WebDAV), User Inbox, Super G3 Fax (Opt.)

<b>Communication Protocol</b>	
File:	FTP (TCP/IP), SMB (TCP/IP), WebDAV
E-mail/I-Fax:	SMTP, POP3, I-FAX (Simple, Full)

<b>File Format</b>	
Standard:	TIFF, JPEG, PDF, PDF (Compact), PDF (Apply Policy), PDF (Optimize for Web), PDF/A-1b, XPS, XPS (Compact)
Optional:	PDF (Trace & Smooth), PDF/ XPS (OCR), PDF (Encrypted), PDF/XPS (Digital Signature), PDF (Reader Extensions), Office Open XML

<b>Maximum Number of Connection Lines</b>	
	4
<b>Modem Speed</b>	
Super G3:	33.6 Kbps
G3:	14.4 Kbps

<b>Compression Method</b>	
	MH, MR, MMR, JBIG

<b>Sending/Recording Size</b>	
	Statement to 11" x 17"

<b>Store Specifications</b>	
<b>Mail Box (Number Supported)</b>	
	100 User Inboxes, 1 Memory RX Inbox, 50 Confidential Fax Inboxes

<b>Advanced Box</b>	
Available	Approx. 10GB (Standard HDD), Disk Space: 664GB (1TB HDD)
Communication	
Protocol:	SMB or WebDAV
Supported	Windows 2000/XP/ Client PC: Windows Vista

<b>Memory Media</b>	
Standard:	USB Memory
Optional:	SD, SDHC, CompactFlash, Memory Stick, Microdrive

## Security Specifications

<b>Standard</b>	
	Department ID Management, Single Sign-On H, Access Management System (Device and Function Level Log-in), Secured Print, Trusted Platform Module, User Access Control of Advanced Box, Mail Box Password Protection, IPV6, Restricting Features (Restricting the Send Function, Restricting New Addresses on Address Book), SSL Encrypted Communication, SNMPv1/v3, MAC/IP Address Filtering, SMTP Authentication, POP Authentication before SMTP, HDD Format, Adobe LifeCycle Rights Management ES2 Integration

## Other Optional Accessories

- Utility Tray-A1
- Upright Control Panel-A1
- USB Key Board
- Key Switch Unit-B1
- Copy Card Reader-C1
- Copy Control Interface Kit-A1
- Barcode Printing Kit-D1
- Web Access Software-H1
- imageRUNNER ADVANCE Essentials
- Universal Send Advanced Feature Set-D1
- Super G3 Fax Board-AD1
- Super G3 2nd Line Fax Board-AD1
- Super G3 3rd/4th Line Fax Board-AE1
- Remote FAX Kit-A1
- Wireless LAN Board-B1
- USB Device Port-A1
- Multimedia Reader/Writer-A1
- Additional Memory Type B (512MB)
- 3.5-inch/80GB HDD-A1
- 3.5-inch/1TB HDD-B1

\* Includes ADF and consumables.  
\*\* EPS and XPS cannot be printed directly from Memory Media or Advanced Box.

NOTE: Some accessories require additional equipment or may be prerequisites for other options. Some accessories cannot be installed simultaneously. Check with your Authorized Canon Dealer for details.



As an ENERGY STAR® Partner, Canon U.S.A., Inc. has determined that these products meet the ENERGY STAR guidelines for energy efficiency. ENERGY STAR and the ENERGY STAR mark are registered U.S. marks. PANTONE® and other Pantone, LLC. trademarks are the property of Pantone, LLC. CANON, IMAGERUNNER, MEAP, and the GENUINE logo are registered trademarks of Canon Inc. in the United States and may also be registered trademarks or trademarks in other countries. IMAGEWARE is a registered trademark of Canon U.S.A., Inc. in the United States and is a trademark of Canon Inc. in certain other countries. IMAGEANYWARE is a trademark of Canon. All other referenced product names and marks are trademarks of their respective owners and are hereby acknowledged. Some items may not be available at this time; please check for availability. Specifications and availability subject to change without notice. All printer output images are simulated. Products are shown with optional accessories.

Canon U.S.A. does not provide legal counsel or regulatory compliance consultancy, including without limitation, Sarbanes Oxley, HIPAA, GLBA, Check 21 or the USA Patriot Act. Each customer must have its own qualified counsel determine the advisability of a particular solution as it relates to regulatory and statutory compliance.  
©2011 Canon U.S.A., Inc. All rights reserved.

Federal Law prohibits copying of certain documents. Violators may be subject to penalties. We suggest that you check with your own legal counsel. Canon U.S.A., Inc. and Canon Canada, Inc. intend to cooperate with Law Enforcement Agencies in connection with claims of unauthorized copying.

